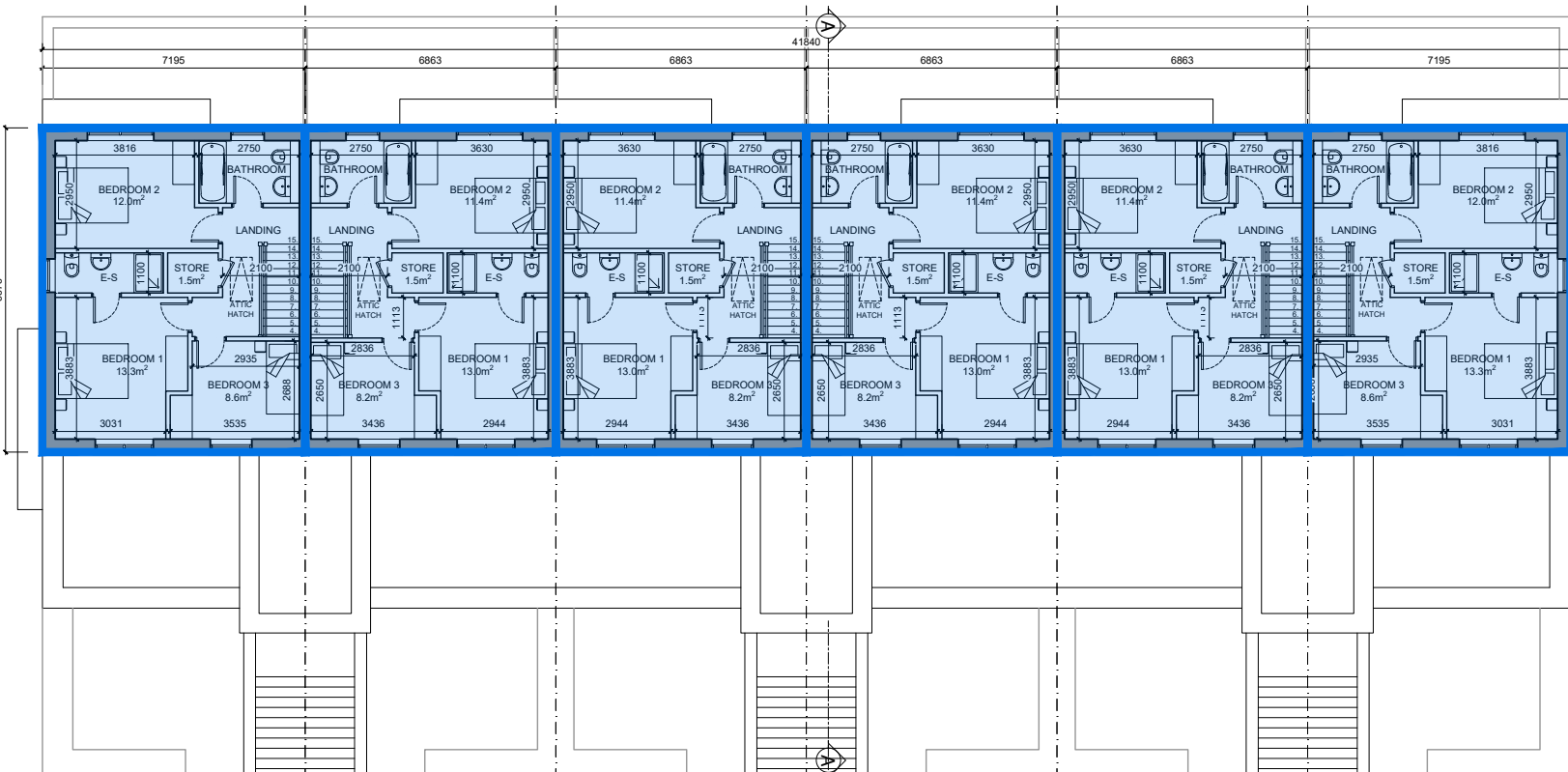
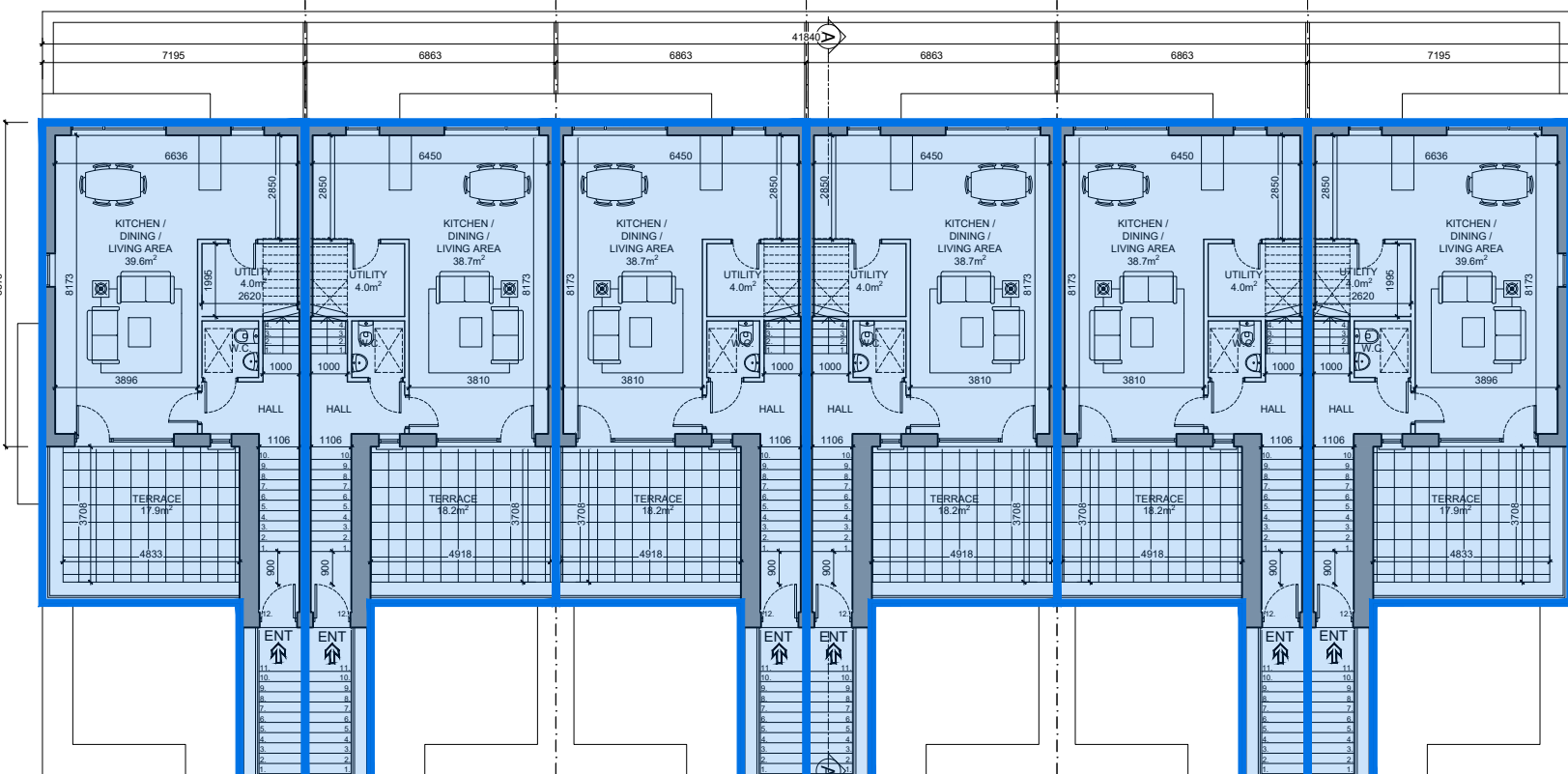


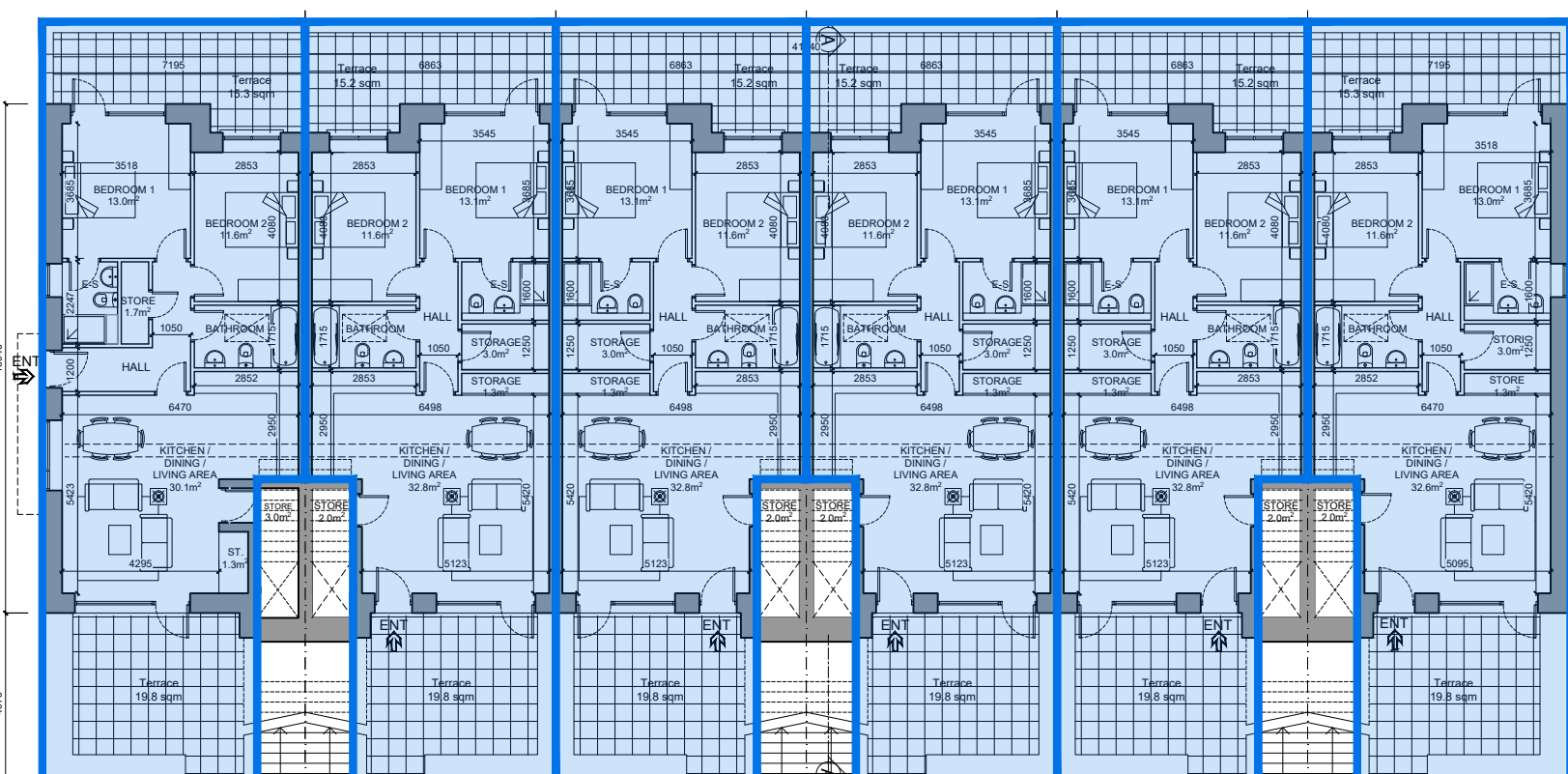
ATTIC PLAN - Unit Types: A2-A3-A3-A3-A2 : (minimum usable storage area per unit as indicated)



N.101 DUPLX A2 SECOND FLOOR PLAN 2F Area = 54.6 m² (O/A Area 114.4 m²)
 N.102 DUPLX A3 SECOND FLOOR PLAN 2F Area = 53.1 m² (O/A Area 111.4 m²)
 N.103 DUPLX A3 SECOND FLOOR PLAN 2F Area = 53.1 m² (O/A Area 111.4 m²)
 N.104 DUPLX A3 SECOND FLOOR PLAN 2F Area = 53.1 m² (O/A Area 111.4 m²)
 N.105 DUPLX A3 SECOND FLOOR PLAN 2F Area = 53.1 m² (O/A Area 111.4 m²)
 N.106 DUPLX A2 SECOND FLOOR PLAN 2F Area = 54.6 m² (O/A Area 114.4 m²)

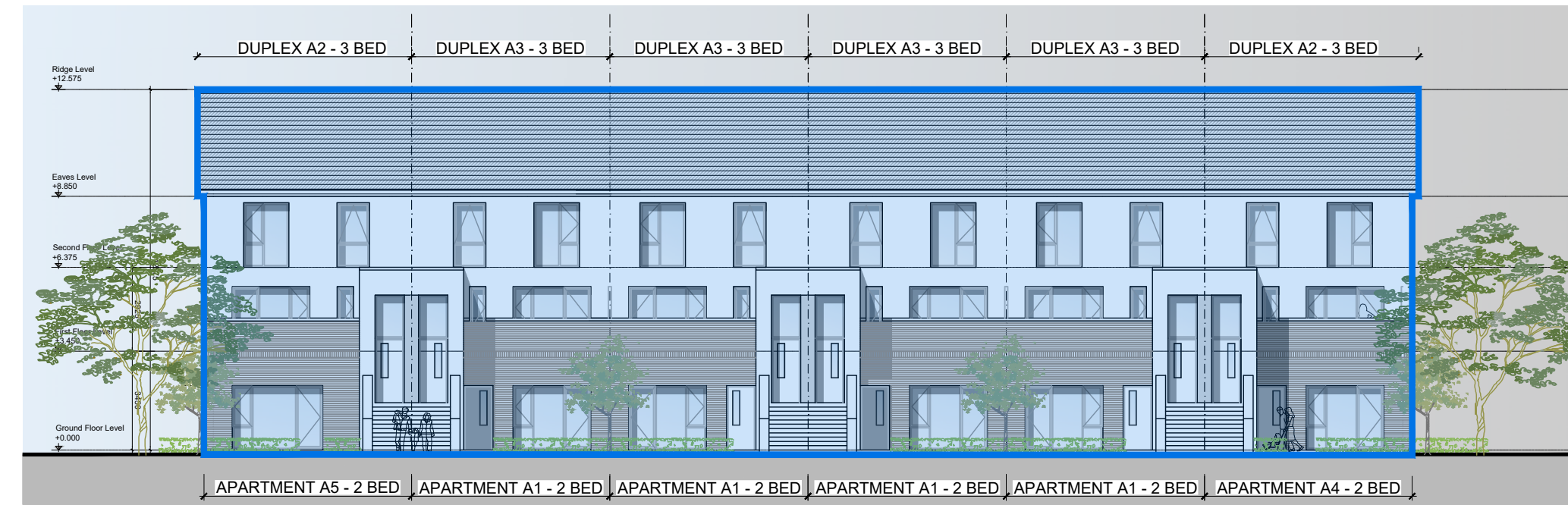


N.101 DUPLX A2 FIRST FLOOR PLAN 1F Area = 53.9 m² (O/A Area 114.4 m²)
 N.102 DUPLX A3 FIRST FLOOR PLAN 1F Area = 53.3 m² (O/A Area 111.4 m²)
 N.103 DUPLX A3 FIRST FLOOR PLAN 1F Area = 53.3 m² (O/A Area 111.4 m²)
 N.104 DUPLX A3 FIRST FLOOR PLAN 1F Area = 53.3 m² (O/A Area 111.4 m²)
 N.105 DUPLX A3 FIRST FLOOR PLAN 1F Area = 53.3 m² (O/A Area 111.4 m²)
 N.106 DUPLX A2 FIRST FLOOR PLAN 1F Area = 53.9 m² (O/A Area 114.4 m²)

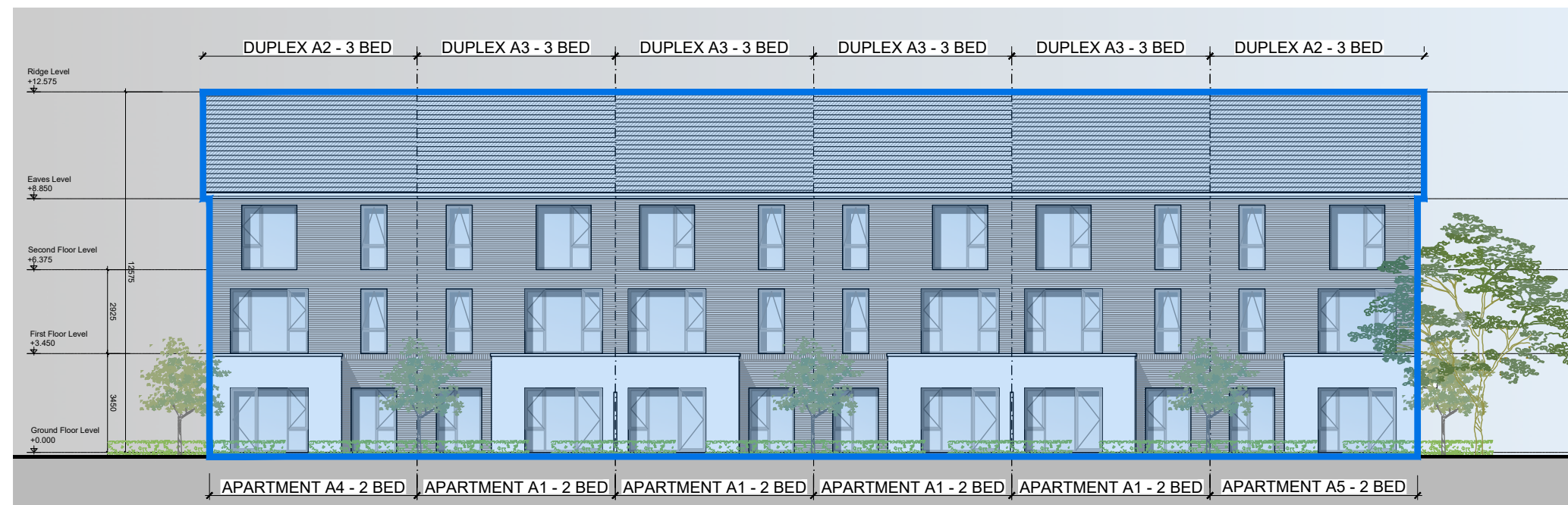


N.95 APARTMENT A5 GROUND FLOOR PLAN Area = 81.6 m²
 N.96 APARTMENT A1 GROUND FLOOR PLAN Area = 82.0 m²
 N.97 APARTMENT A1 GROUND FLOOR PLAN Area = 82.0 m²
 N.98 APARTMENT A1 GROUND FLOOR PLAN Area = 82.0 m²
 N.99 APARTMENT A1 GROUND FLOOR PLAN Area = 82.0 m²
 N.100 APARTMENT A4 GROUND FLOOR PLAN Area = 81.6 m²

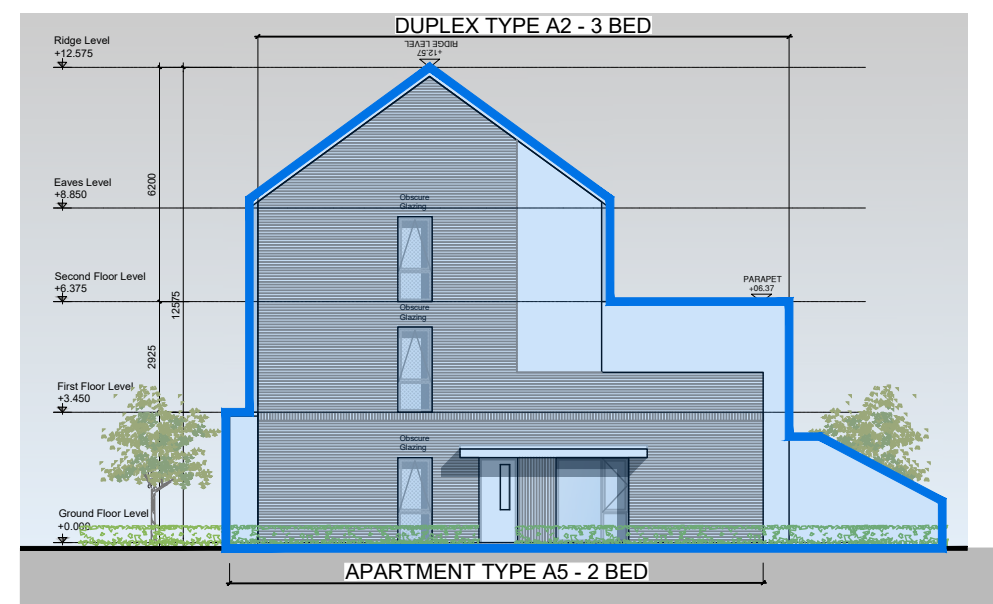
DUPLX BLOCK I - GROUND, FIRST, SECOND FLOOR AND ATTIC PLAN SCALE 1:200



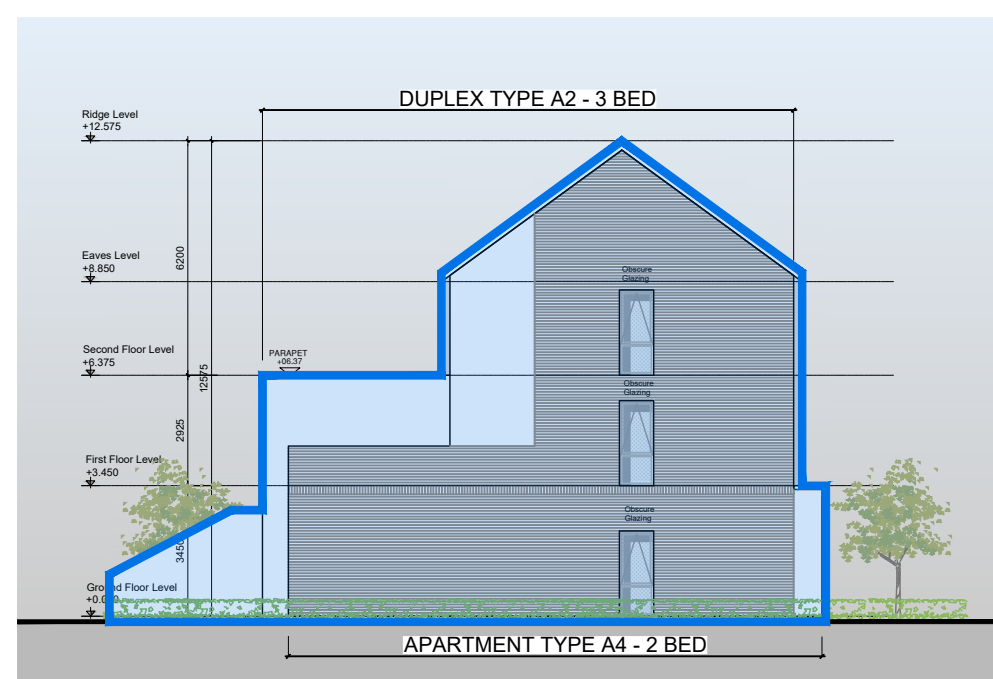
SOUTH-WEST ELEVATION Scale 1:200



NORTH-EAST ELEVATION Scale 1:200



NORTH-WEST ELEVATION Scale 1:200

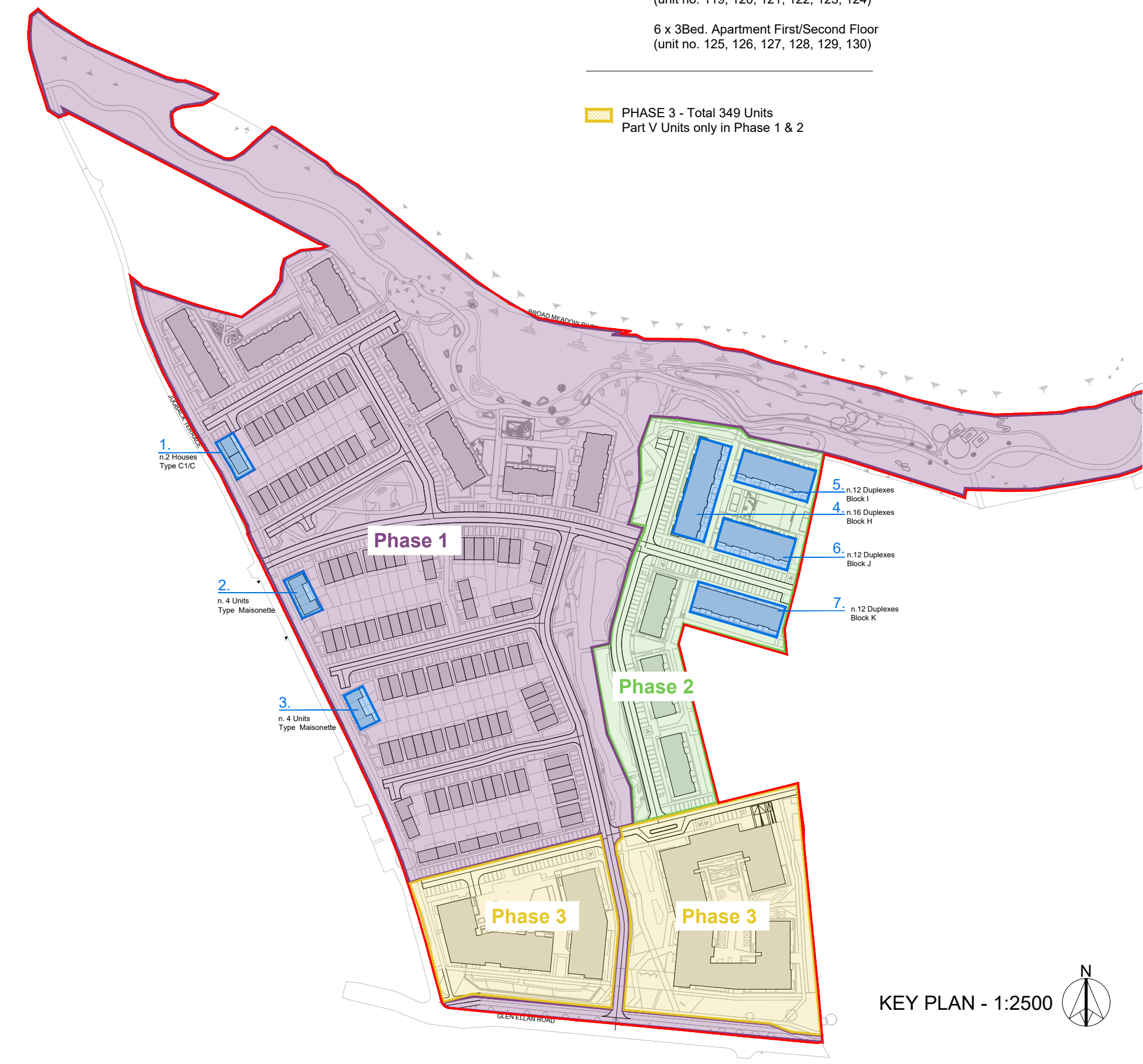


SOUTH-EAST ELEVATION Scale 1:200

GENERAL NOTES

THIS DRAWING TO BE READ IN CONJUNCTION WITH ARCHITECT'S DRAWINGS, CONSULTANT ENGINEER'S DRAWINGS AND SPECIFICATIONS, AND LANDSCAPE ARCHITECT'S DRAWINGS AND SPECIFICATIONS.

- Part V - Units Outlined in Blue
 - Phase 1 - 196 Units (n.10 for Part V)
 - Phase 2 - 76 Units (n. 52 for Part V)
 - Phase 3 - 349 Units (no Part V units)
- Overall Development n.621 units
 Min. 10% requirement for Part V
 n.62 Units Total provided
- | | |
|-------|-------|
| 1 Bed | n. 8 |
| 2 Bed | n. 25 |
| 3 Bed | n. 28 |
- PHASE 1 - Total 196 Units (n.10 for Part V)
 - HOUSES TYPE C1-C
 2 x 3Bed. Houses (2 Storey)
 (Unit no. 117 and 118)
 - MAISONNETTE
 8 x 1 Bed. Apartment
 (Unit no. 53,54,55,56,90,91,92,93)
 - PHASE 2 - Total 76 Units (n.52 for Part V)
 - DUPLX BLOCK H
 8 x 2Bed. Apartment Ground Floor
 (unit no. 79, 80, 81, 82, 83, 84, 85, 86)
 8 x 3Bed. Apartment First/Second Floor
 (unit no. 87, 88, 89, 90, 91, 92, 93, 94)
 - DUPLX BLOCK I
 6 x 2Bed. Apartment Ground Floor
 (unit no. 95, 96, 97, 98, 99, 100)
 6 x 3Bed. Apartment First/Second Floor
 (unit no. 101, 102, 103, 104, 105, 106)
 - DUPLX BLOCK J
 6 x 2Bed. Apartment Ground Floor
 (unit no. 107, 108, 109, 110, 111, 112)
 6 x 3Bed. Apartment First/Second Floor
 (unit no. 113, 114, 115, 116, 117, 118)
 - DUPLX BLOCK K
 6 x 2Bed. Apartment Ground Floor
 (unit no. 119, 120, 121, 122, 123, 124)
 6 x 3Bed. Apartment First/Second Floor
 (unit no. 125, 126, 127, 128, 129, 130)
 - PHASE 3 - Total 349 Units
 Part V Units only in Phase 1 & 2



KEY PLAN - 1:2500

NOTES:
 DO NOT SCALE FROM DRAWINGS. WORK TO FIGURED DIMENSIONS ONLY. ARCHITECT TO BE NOTIFIED OF ALL DISCREPANCIES.

CLIENT:		REVISIONS	
DATE	DESCRIPTION	DATE	No.
Mar'22	CAIRN Homes Properties Ltd		

	PROJECT TITLE:	DATE:	Mar'22	DRAWN BY:	IDF
	DRAWING TITLE:	SCALE:	1:200@A1	REVISION:	
	Part V Provision	JOB NO:	19022	DRAWING NO:	PL60
	Phase 2 - Sheet 3 of 5	1 Granham Street, Dublin 8, D08 A9P9, Ireland. Tel: 01-4788700 Fax: 01-4788711 E-Mail: aca@mcorm.com			